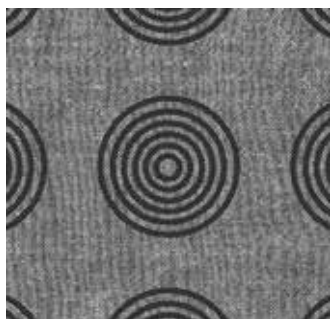


Geishas & Ginkgos

BY LONNI ROSSI



Three Geishas Quilts
designed by: **Lonni Rossi**

Panel Sizes: **13" x 36"**

andoverfabrics.com

About Geishas & Ginkgos

THE GIRLS ARE BACK! Andover Fabrics and Lonni Rossi have heard their customers ask about the availability of Lonni's Geisha panels that were produced in the past. Now they have brought back those images, along with three coordinating ginkgo motifs in five color ways, all printed on Andover's soft and beautiful Chambray woven cottons.

andover



makower uk
The Henley Studio

Free Pattern Download Available

1384 Broadway New York, NY 10018
Tel. (800) 223-5678 • andoverfabrics.com



FABRIC	5 KITS	10 KITS	20 KITS
7973-K	1	1	2

FROM EACH	1	1	1
7974-MB	7974-MG	7974-MP	
7974-MR	7975-B	7976-B	
7976-P	A-C-Bluegrass		
A-C-Gourd	A-C-Marigold		
A-C-Tailor	A-C-Ebony		

BACKING	1	2	3
A-C-Linen	1	2	3

Yardage needed for backing: 1¼ YDS

Yardage is sufficient for making all 3 Geisha quilts.

Bolts needed to cut project kits.
15 yds = 1 bolt

Fabrics shown are 10% of actual size.

Fabrics used in quilt patterns are shown in black.

PC-7973-K 1 panel (1 yd)



PC-7974-MB Fat ¼ yd



PC-7974-MG ½ yd



PC-7974-MK



PC-7974-MP Fat ¼ yd



PC-7974-MR ½ yd



PC-7975-B ½ yd



PC-7975-G



PC-7975-KR



PC-7975-P



PC-7975-RO



PC-7976-B Fat ¼ yd



PC-7976-G



PC-7976-K



PC-7976-P ½ yd



PC-7976-RN



A-C-Bluegrass ¾ yd



A-C-Gourd ¾ yd



A-C-Linen 1¼ yds
(backng)



A-C-Marigold
Fat ¼ yd



A-C-Tailor ¾ yd



A-C-Ebony ¾ yd

Geishas & Ginkgos

BY LONNI ROSSI

andover

makower uk
The Harley Studio